

Lead in Drinking Water

Alaina Ungarini

New Jersey Department of Environmental
Protection



Lead in Drinking Water

Brief History of Lead in Drinking Water

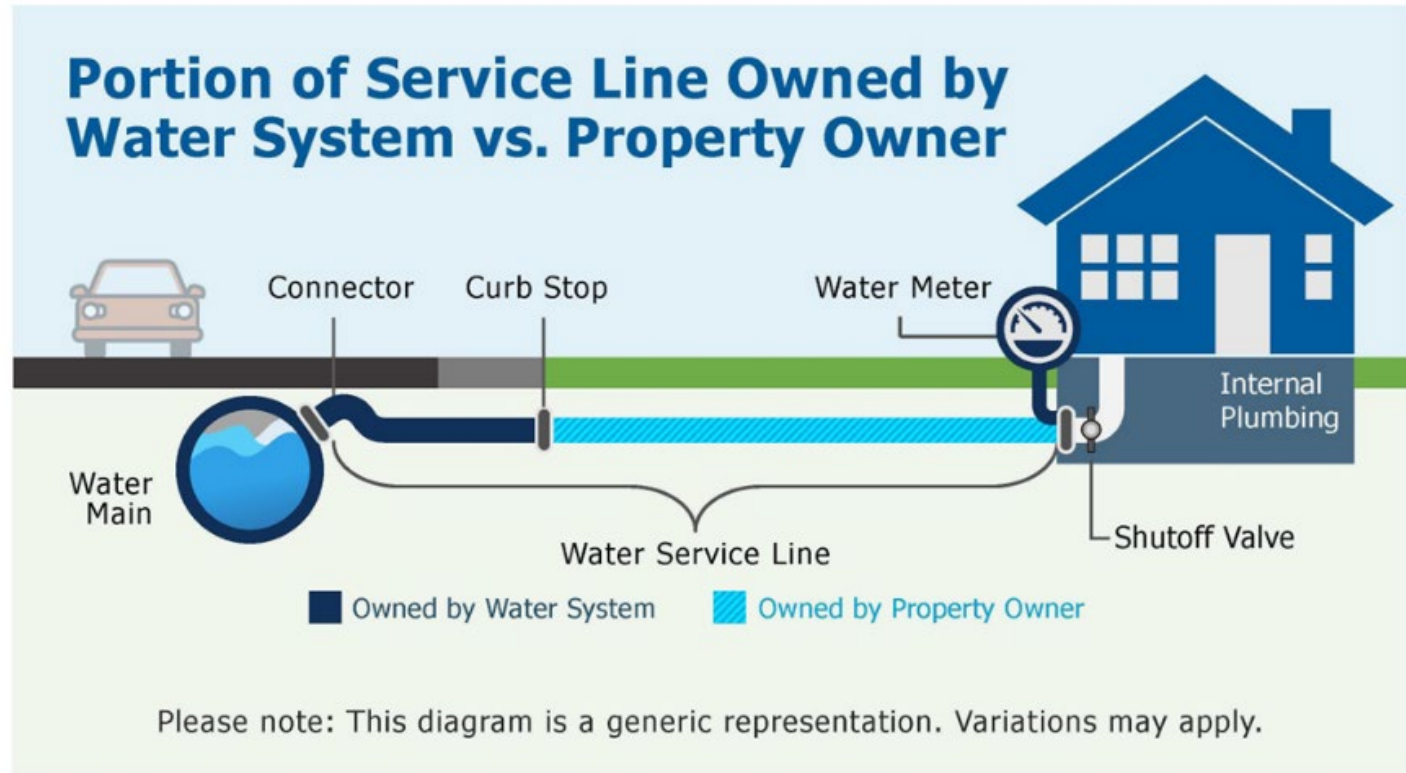
- Lead has a long history of use in plumbing
- EPA banned lead from use in plumbing in the late 1980s
- Many lead service lines are still in use today all over the nation, including NJ

Health effects

- Health of all age groups can be effected
- Children and infants can have decrease IQ and attention span
- Can lead to new learning and behavior problem or exacerbate existing learning and behavioral issues in children
- Women who are exposed during pregnancy have increased risk of these adverse health effects
- Adults can have increased risks of heart disease, high blood pressure, kidney or nervous system problems.



What is a Service Line?



Lead Service Line Replacements in NJ

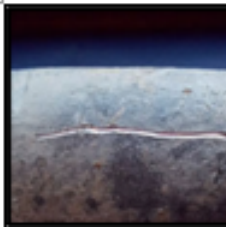


- NJ Lead Service Line Replacement Law passed in 2021. Requires all lead service lines to be replaced by 2031
- EPA's LCRR/LCRI requires many of the same things as NJ's law, plus more
- Statewide effort to identify and replace service lines is ongoing in NJ
- Recent data shows over 100,000 known LSLs and over 800,000 service lines still need to be identified



What Can You Do To Help?

Identifying Service Line Materials



Lead pipes reveal a shiny silver color when gently scratched with a coin or key and are **not** magnetic. Lead service lines contribute to lead in your water supply and need to be replaced.



Galvanized Iron or Steel pipes are silver or gray in color and are magnetic. Galvanized pipes can contribute to lead in your water supply and are considered lead service lines. Any galvanized iron or steel service lines need to be replaced.



Plastic pipes are often white or gray but can also be other colors. Plastic pipes do not contribute to lead in your water supply.



Copper pipes will reveal a shiny penny color when gently scratched with a coin or key. A magnet will not stick to copper pipe. Copper pipes do not contribute to lead in your water supply.

Contact your water system and report
your service line materials!



Thank you!

