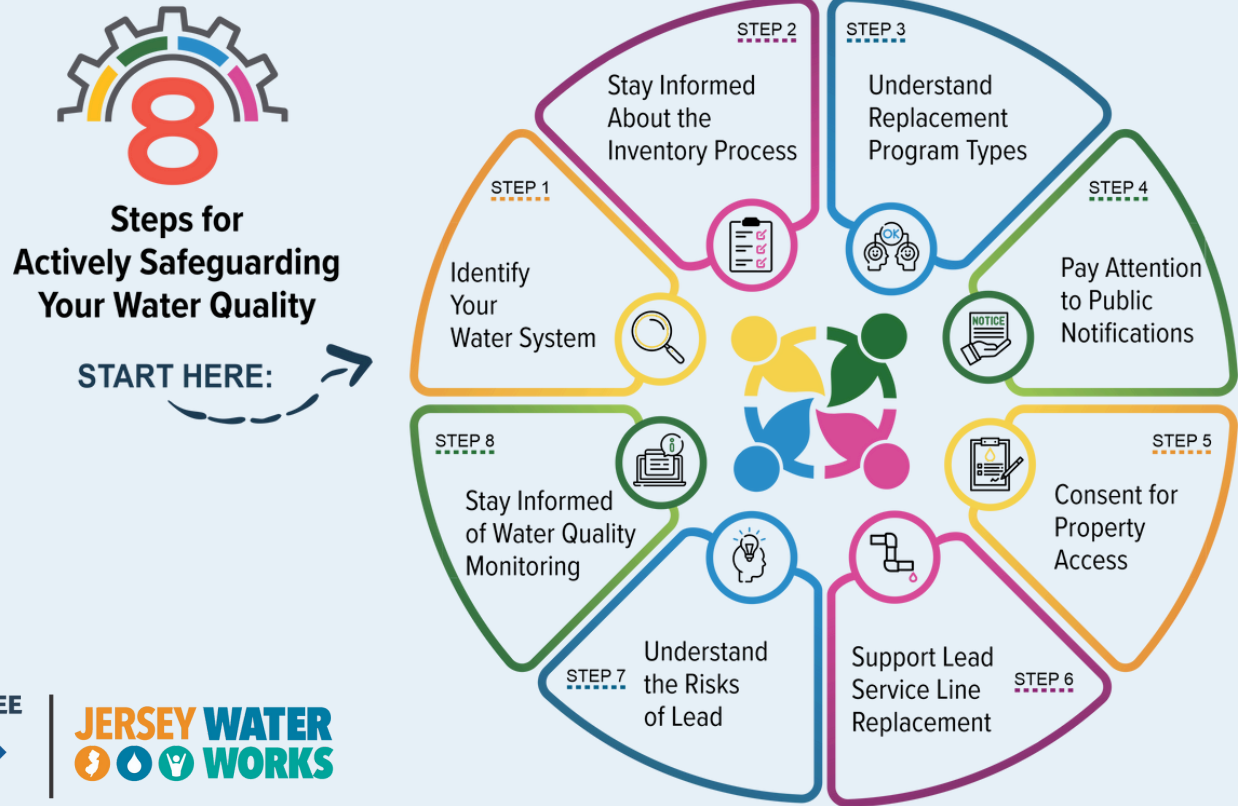
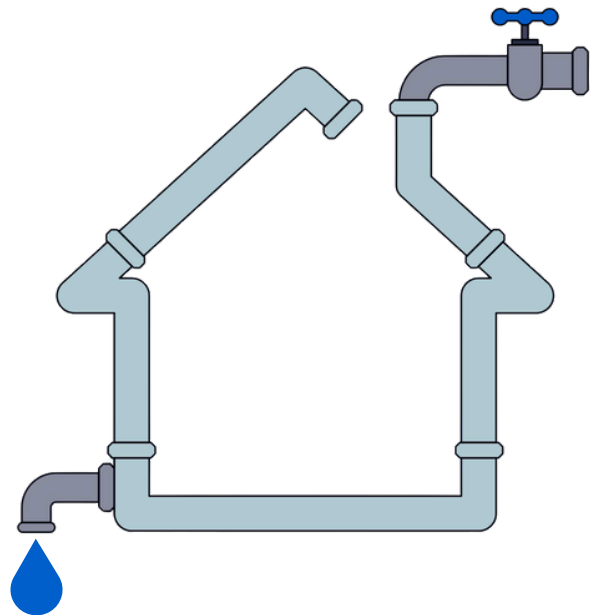


# Protect Your Community: Eliminate Lead Service Lines



Smart Infrastructure. Lead-Free Communities.

To ensure the safety of your community's water supply, it is essential to be informed and engaged in the process of replacing lead service lines (LSLs). Here are the steps you can take to protect your family and neighbors:





## 1. Identify Your Water System



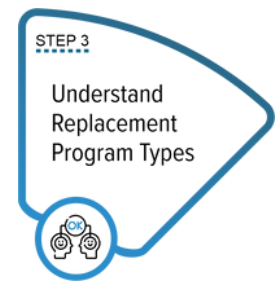
- ▶ Learn who supplies your water, usually the company that bills you.
- ▶ If you are a non-paying customer, you can use the [Jersey WaterCheck System Finder](#) to find your supplier.
- ▶ Learn more about your water supplier by speaking with your property manager or landlord (if comfortable).



## 2. Stay Informed About the Inventory Process



- ▶ All water systems are required to post an updated inventory online.
- ▶ If you have a confirmed/unknown LSL, use a filter while waiting for your scheduled replacement (see step 7).
- ▶ Find out if your water system accepts photos for service line verification and submit photos.
- ▶ Be aware of the locations of lead service lines in your water system and whether your property is affected.
- ▶ Verify who can provide access to the property (see Step 5).



### 3. Understand Replacement Program Types



- ▶ Learn about the types of lead service line replacement programs, which may include: free and voluntary programs, free and mandatory programs, or a customer cost-share.
- ▶ Stay informed about how these funding mechanisms will affect you and your community.
- ▶ Learn about opportunities to advocate for municipal ordinances that require free and mandatory programs.
- ▶ Check to see if your water supplier is offering grants or supplementary programs, etc.



### 4. Pay Attention to Public Notifications



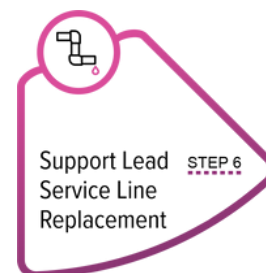
- ▶ Look for notifications about upcoming lead service line replacement projects in your area.
- ▶ Understand the health risks associated with lead exposure and the benefits of replacing lead pipes for your well-being.
- ▶ Share information with neighbors and the local community.
- ▶ Read all the door hangers, lawn signs, or other public notices.

## 5. Understand how to Engage in the Consent Process for Inspection or Replacement



- ▶ Find out who can give the water system consent to enter the property. Some water systems have a Right of Entry ordinance that allows any property resident to grant consent.
- ▶ Visit your water system's website; there may be ways to sign the Right of Entry waiver online.
- ▶ Water systems may provide physical copies of consent forms for signatures.

## 6. Support Lead Service Line Replacement



- ▶ If you are a renter, ensure your landlord is aware of the water systems plan for the service line replacement.
- ▶ If you are a homeowner, stay informed about the replacement plan, timeline, and any costs that may be incurred by homeowners.
- ▶ Ensure the water system has access to your property at the time scheduled for replacement.



## 7. Understand the Risks of Lead



- ▶ Tap water may still contain lead even if you do not have a lead service line.
- ▶ Indoor lead plumbing and lead components could contribute to elevated levels of lead in drinking water.
- ▶ Ensure filters are NSF/ANSI Standard 53 along with a claim of lead reduction or filters tested against NSF/ANSI Standard 42 for particulate reduction (Class I) (see Figure 1 and 2).
- ▶ Pitcher filters may require replacement cartridges; be sure to replace cartridges regularly.
- ▶ Verify your filter by using the search feature for NSF Certified Drinking Water Treatment Units.
- ▶ Review best practices for using water filters.

Fig. 1

**Certification Marks, Standards Text, and Claims of Reduction on Filter Packaging**

Certification marks are detailed in the Table on Page 1. Examples of certification marks, NSF/ANSI Standards 42 and 53 text, and claims of lead reduction and particulate reduction (Class I) as found on product packaging are shown below.

Contaminant Category	Specific Contaminants
Heavy metals	Mercury, Lead, Cadmium
Taste and Odor	Chlorine
Particulates	Particulate I
Industrial pollutants	Asbestos, Benzene
Pharmaceuticals	Estrone, Ibuprofen, Naproxen
Industrial chemicals	Bisphenol A, Nonyl Phenol

**Certification Mark on Packaging**

**Example Text for Standards 42 & 53 Next to Certification Mark**

**Claim of Lead Reduction on Packaging**

**Claim of Particulate Reduction (Class I) on Packaging**

**Certifier's Mark**

System Tested and Certified by (name of certification body) against NSF/ANSI Standards 42 and 53 for the reduction of the claims specified on the Performance Data Sheet.

Sistema Probado Certificado por (nom de l'organisme de certification) según las Normas 42 y 53 NSF/ANSI para la reducción de lo afirmado específicamente en la Hoja de Datos Rendimiento.

WHAT WE FILTER OUT

Filter is certified to reduce the following contaminants to give you cleaner, great-tasting water.






EASY SETUP

With quick setup, you can start using your filter today.

WASH YOUR HANDS BEFORE USE.

DISCARD FIRST CARTRIDGE.

Fig. 2

Certification Mark(s)	
 <p>Product Listing Directory: <a href="http://info.nsf.org/Certified/DWTU/">info.nsf.org/Certified/DWTU/</a></p>	 <p>Product Listing Directory: <a href="http://wqa.org/Find-Products#/">wqa.org/Find-Products#/</a></p>
 <p>Product Listing Directory: <a href="http://pld.iapmo.org/">pld.iapmo.org/</a></p>	 <p>Note: For UL, text must be located underneath the mark. The File No. is a unique product identification number.</p> <p>Product Listing Directory: <a href="http://database.ul.com/cgi-bin/XYV/template/LISEXT/1FRAME/index.html">database.ul.com/cgi-bin/XYV/template/LISEXT/1FRAME/index.html</a></p> <p>File No.</p>
 <p>Product Listing Directory: <a href="http://csagroup.org/testing-certification/product-listing/">csagroup.org/testing-certification/product-listing/</a></p>	<p><b>Text for NSF/ANSI Standards 42 &amp; 53 next to certification marks:</b></p> <ul style="list-style-type: none"> <li>• Example text on packaging: <i>Tested and Certified by (name of certification body) against NSF/ANSI Standards 42 and 53 for the claims specified on the Performance Data Sheet.</i></li> <li>• Some companies may indicate lead removal in the text, or might simply state NSF/ANSI 53 or NSF/ANSI 42 above or below the mark.</li> </ul>



## 8. Stay informed of Water Quality Monitoring



- After replacement work is completed, consider participating in water quality monitoring by offering water samples when requested.
- Stay informed about lead and copper sampling requirements and other water quality parameters that impact your community's health.

By actively participating in these steps, residents can play a crucial role in protecting their community from the dangers of toxic lead pipes and ensuring the safety and quality of their water supply for generations to come.



## Protect Your Community: Eliminate Lead Service Lines

